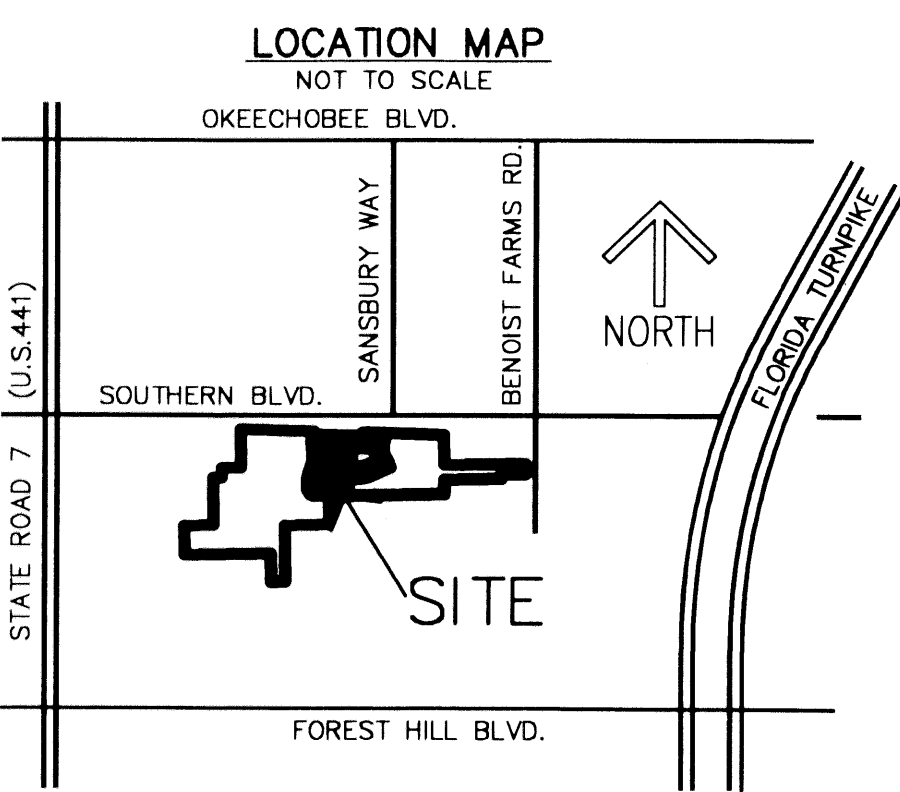


2004-0171884

0786-007
174

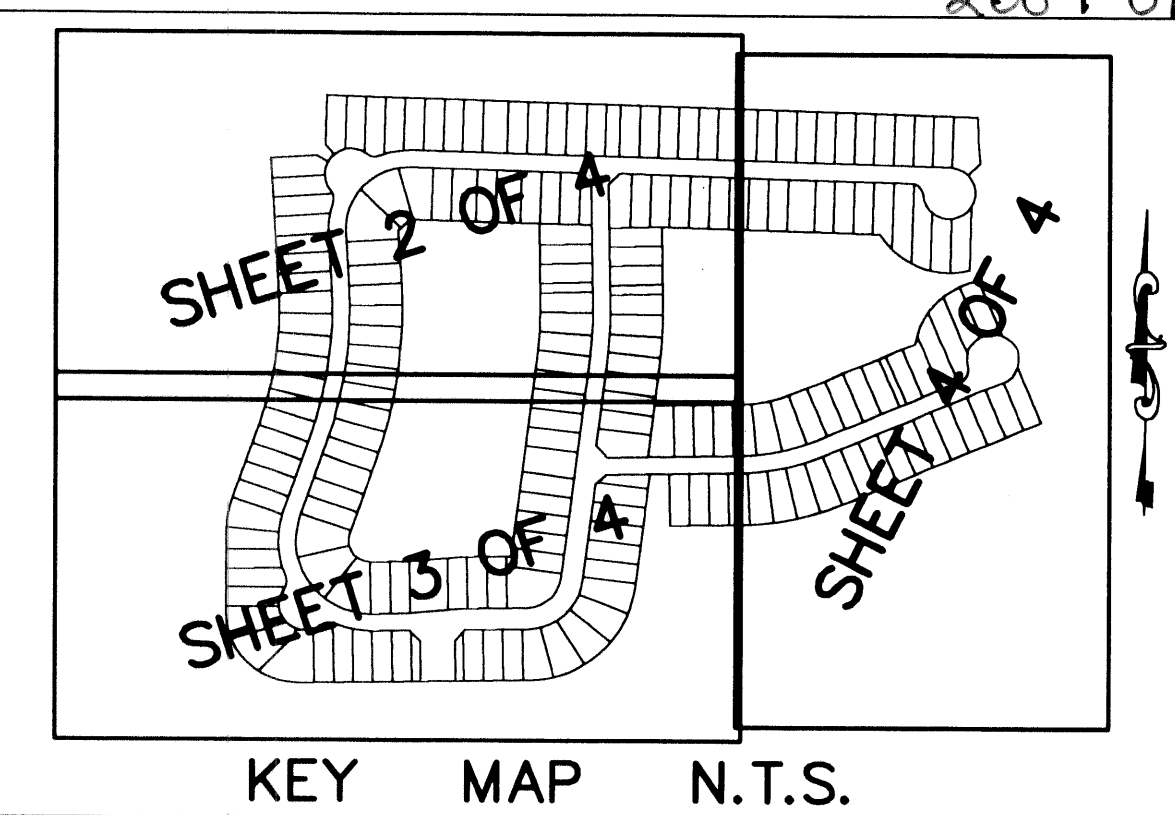
DIAMOND "C" RANCH POD E/F REPLAT

A PLANNED UNIT DEVELOPMENT BEING A PART OF DIAMOND "C" RANCH PUD, BEING A REPLAT OF POD E/F, DIAMOND "C" RANCH, AS RECORDED IN PLAT BOOK 99, PAGES 173 THROUGH 179 OF THE PUBLIC RECORDS OF PALM BEACH COUNTY, FLORIDA LYING IN SECTION 6, TOWNSHIP 44 SOUTH, RANGE 42 EAST, PALM BEACH COUNTY, FLORIDA



TABULAR DATA	
TOTAL AREA THIS PLAT	38.58 ACRES
AREA OF PRIVATE ROAD TRACTS R - R2	5.72 ACRES
AREA OF TRACT W	6.02 ACRES
AREA OF TRACTS L - L4	0.29 ACRES
AREA OF TRACTS F AND F1	0.34 ACRES
AREA OF RESIDENTIAL USE ZERO LOT LINE	26.21 ACRES
NUMBER OF UNITS - 192	4.98 D.U./AC.
PETITION NO. PDD 97-121	

THIS INSTRUMENT PREPARED BY DAVID P. LINDLEY OF CAULFIELD and WHEELER, INC. SURVEYORS - ENGINEERS - PLANNERS 7301-A WEST PALMETTO PARK ROAD, SUITE 100A BOCA RATON, FLORIDA 33433 - (561)392-1991 SEPTEMBER - 2002



STATE OF FLORIDA COUNTY OF PALM BEACH THIS PLAT WAS FILED FOR RECORD AT 2:52 P.M. THIS 22 DAY OF March A.D. 2004 AND DULY RECORDED IN PLAT BOOK 101 ON PAGES 144 AND 147 DOROTHY H. WILKEN CLERK CIRCUIT COURT

By: *Anna J. Oll* DEPUTY CLERK

DEDICATIONS AND RESERVATIONS:

KNOW ALL MEN BY THESE PRESENTS THAT TOWN & COUNTRY BUILDERS, INC., A FLORIDA CORPORATION, OWNER OF THE LAND SHOWN HEREON AS DIAMOND "C" RANCH POD E/F REPLAT, BEING A REPLAT OF POD E/F, DIAMOND "C" RANCH, ACCORDING TO THE PLAT THEREOF, AS RECORDED IN PLAT BOOK 99, PAGES 173 THROUGH 179, OF THE PUBLIC RECORDS OF PALM BEACH COUNTY, FLORIDA, LYING IN SECTION 6, TOWNSHIP 44 SOUTH, RANGE 42 EAST, PALM BEACH COUNTY, FLORIDA, CONTAINING 1,680,147 SQUARE FEET OR 38.58 ACRES, MORE OR LESS.

HAVE CAUSED THE SAME TO BE SURVEYED AND PLATTED, AS SHOWN HEREON, AND DO HEREBY DEDICATE AS FOLLOWS:

1. WATER MANAGEMENT TRACTS

TRACT W AS SHOWN HEREON IS HEREBY RESERVED FOR THE PALM BEACH PLANTATION HOMEOWNERS ASSOCIATION, INC., ITS SUCCESSORS AND ASSIGNS, FOR STORMWATER MANAGEMENT AND DRAINAGE PURPOSES AND IS THE PERPETUAL MAINTENANCE OBLIGATION OF SAID ASSOCIATION, ITS SUCCESSORS AND ASSIGNS, WITHOUT RECOURSE TO PALM BEACH COUNTY.

2. DRAINAGE, LAKE MAINTENANCE, LAKE MAINTENANCE ACCESS EASEMENTS

THE DRAINAGE EASEMENTS, AS SHOWN HEREON, ARE HEREBY DEDICATED IN PERPETUITY FOR DRAINAGE PURPOSES. THE MAINTENANCE OF ALL DRAINAGE FACILITIES LOCATED THEREIN SHALL BE THE PERPETUAL MAINTENANCE OBLIGATION OF THE PALM BEACH PLANTATION HOMEOWNERS ASSOCIATION, INC., ITS SUCCESSORS AND ASSIGNS, WITHOUT RECOURSE TO PALM BEACH COUNTY.

THE LAKE MAINTENANCE EASEMENTS, AS SHOWN HEREON, ARE HEREBY RESERVED FOR THE PALM BEACH PLANTATION HOMEOWNERS ASSOCIATION, INC., ITS SUCCESSORS AND ASSIGNS, FOR ACCESS TO STORMWATER MANAGEMENT AND DRAINAGE FACILITIES LOCATED WITHIN THE ASSOCIATED WATER MANAGEMENT TRACTS FOR PURPOSES OF PERFORMING ANY AND ALL MAINTENANCE ACTIVITIES PURSUANT TO THE MAINTENANCE OBLIGATION OF SAID ASSOCIATION, ITS SUCCESSORS AND ASSIGNS, WITHOUT RECOURSE TO PALM BEACH COUNTY.

PALM BEACH COUNTY SHALL HAVE THE RIGHT, BUT NOT THE OBLIGATION, TO MAINTAIN ANY PORTION OF THE DRAINAGE SYSTEM ENCOMPASSED BY THIS PLAT, WHICH IS ASSOCIATED WITH THE DRAINAGE OF PUBLIC STREETS, INCLUDING THE RIGHT TO UTILIZE FOR PROPER PURPOSES ANY AND ALL DRAINAGE, LAKE MAINTENANCE, AND LAKE MAINTENANCE ACCESS EASEMENTS AND PRIVATE ROADS ASSOCIATED WITH SAID DRAINAGE SYSTEM.

3. PRIVATE STREET

TRACT "R" AS SHOWN HEREON IS HEREBY RESERVED FOR THE PALM BEACH PLANTATION HOMEOWNERS ASSOCIATION, INC. ITS SUCCESSORS AND ASSIGNS, FOR PRIVATE STREET PURPOSES AND OTHER PURPOSES NOT INCONSISTENT WITH THIS RESERVATION, AND IS THE PERPETUAL MAINTENANCE OBLIGATION OF SAID ASSOCIATION, ITS SUCCESSORS AND ASSIGNS, WITHOUT RECOURSE TO PALM BEACH COUNTY.

4. RESIDENTIAL ACCESS STREET

TRACTS R1 AND R2 AS SHOWN HEREON ARE RESERVED FOR THE PALM BEACH PLANTATION HOMEOWNERS ASSOCIATION, INC., ITS SUCCESSORS AND ASSIGNS, AS RESIDENTIAL ACCESS STREETS FOR PRIVATE STREET PURPOSES AND OTHER PURPOSES NOT INCONSISTENT WITH THIS RESERVATION AND ARE THE PERPETUAL MAINTENANCE OBLIGATION OF SAID ASSOCIATION, ITS SUCCESSORS AND ASSIGNS, WITHOUT RECOURSE TO PALM BEACH COUNTY.

5. OPEN SPACE TRACTS

TRACTS "L" THROUGH "L4" AS SHOWN HEREON ARE HEREBY RESERVED FOR THE PALM BEACH PLANTATION HOMEOWNERS ASSOCIATION, INC., ITS SUCCESSORS AND ASSIGNS, FOR OPEN SPACE PURPOSES AND ARE THE PERPETUAL MAINTENANCE OBLIGATION OF SAID ASSOCIATION, ITS SUCCESSORS AND ASSIGNS, WITHOUT RECOURSE TO PALM BEACH COUNTY.

6. UTILITY EASEMENTS

THE UTILITY EASEMENTS SHOWN HEREON ARE HEREBY DEDICATED IN PERPETUITY FOR THE CONSTRUCTION AND MAINTENANCE OF UTILITY FACILITIES, INCLUDING CABLE TELEVISION SYSTEMS. THE INSTALLATION OF CABLE TELEVISION SYSTEMS SHALL NOT INTERFERE WITH THE CONSTRUCTION AND MAINTENANCE OF OTHER UTILITIES.

THE UTILITY EASEMENTS RUNNING ADJACENT AND PARALLEL TO THE TRACTS FOR PRIVATE ROAD PURPOSES, AS SHOWN HEREON, ARE NON-EXCLUSIVE EASEMENTS AND ARE HEREBY DEDICATED IN PERPETUITY TO THE PUBLIC FOR THE INSTALLATION, OPERATION, MAINTENANCE, REPAIR, EXPANSION AND REPLACEMENT OF UTILITIES, BOTH PUBLIC AND PRIVATE, INCLUDING, BUT NOT LIMITED TO, POTABLE WATER PIPELINES, RAW WATER PIPELINES, WASTEWATER PIPELINES, RECLAIMED WATER PIPELINES, ELECTRIC POWER LINES, TELECOMMUNICATION LINES, CABLE TELEVISION LINES, GAS LINES, AND RELATED APPURTENANCES. THE INSTALLATION OF CABLE TELEVISION SYSTEMS SHALL NOT INTERFERE WITH THE CONSTRUCTION AND MAINTENANCE OF OTHER UTILITIES. NO BUILDINGS, STRUCTURES, IMPROVEMENTS, TREES, WALLS OR FENCES SHALL BE INSTALLED WITHIN THESE EASEMENTS WITHOUT THE PRIOR WRITTEN APPROVAL OF THE PALM BEACH COUNTY WATER UTILITIES DEPARTMENT, ITS SUCCESSORS AND ASSIGNS.

ALL TRACTS FOR PRIVATE STREET AND RESIDENTIAL ACCESS PURPOSES, AS SHOWN HEREON, ARE HEREBY SUBJECT TO AN OVERLYING NON-EXCLUSIVE EASEMENT DEDICATED IN PERPETUITY TO THE PUBLIC FOR THE INSTALLATION, OPERATION, MAINTENANCE, REPAIR, EXPANSION AND REPLACEMENT OF UTILITIES, BOTH PUBLIC AND PRIVATE, INCLUDING, BUT NOT LIMITED TO, POTABLE WATER PIPELINES, RAW WATER PIPELINES, WASTEWATER PIPELINES, RECLAIMED WATER PIPELINES, ELECTRIC POWER LINES, TELECOMMUNICATION LINES, CABLE TELEVISION LINES, GAS LINES, AND RELATED APPURTENANCES. NO BUILDINGS, STRUCTURES, IMPROVEMENTS, TREES, WALLS OR FENCES SHALL BE INSTALLED WITHIN THESE TRACTS WITHOUT THE PRIOR WRITTEN APPROVAL OF THE PALM BEACH COUNTY WATER UTILITIES DEPARTMENT, ITS SUCCESSORS AND ASSIGNS.

THE P.B.C. UTILITY EASEMENTS IDENTIFIED ON THE PLAT HEREON ARE EXCLUSIVE EASEMENTS AND ARE HEREBY DEDICATED IN PERPETUITY TO PALM BEACH COUNTY, ITS SUCCESSORS AND ASSIGNS, FOR THE INSTALLATION, OPERATION, MAINTENANCE, REPAIR, EXPANSION AND REPLACEMENT OF POTABLE WATER PIPELINES, RAW WATER PIPELINES, RECLAIMED WATER PIPELINES, AND RELATED APPURTENANCES. THE MAINTENANCE OF THE LAND UNDERLYING THESE EASEMENTS SHALL BE A PERPETUAL OBLIGATION OF THE PROPERTY OWNER. NO BUILDINGS, STRUCTURES, IMPROVEMENTS, TREES, WALLS OR FENCES SHALL BE INSTALLED WITHIN THESE EASEMENTS WITHOUT THE PRIOR WRITTEN APPROVAL OF THE PALM BEACH COUNTY WATER UTILITIES DEPARTMENT, ITS SUCCESSORS AND ASSIGNS.

7. RECREATIONAL AREAS

TRACTS F AND F1 AS SHOWN HEREON ARE HEREBY RESERVED FOR THE PALM BEACH PLANTATION HOMEOWNERS ASSOCIATION, INC., ITS SUCCESSORS AND ASSIGNS, FOR RECREATIONAL PURPOSES AND ARE THE PERPETUAL MAINTENANCE OBLIGATION OF SAID ASSOCIATION, ITS SUCCESSORS AND ASSIGNS, WITHOUT RECOURSE TO PALM BEACH COUNTY.

8. OVERHANG/MAINTENANCE EASEMENTS

OVERHANG/MAINTENANCE EASEMENTS AS SHOWN HEREON ARE HEREBY RESERVED IN PERPETUITY FOR THE ABUTTING LOT OWNERS, THEIR SUCCESSORS AND ASSIGNS, FOR MAINTENANCE OF ROOF OVERHANGS, WITHOUT RECOURSE TO PALM BEACH COUNTY.

9. LANDSCAPE BUFFER EASEMENTS

LANDSCAPE BUFFER EASEMENTS AS SHOWN HEREON ARE HEREBY RESERVED FOR THE PALM BEACH PLANTATION HOMEOWNERS ASSOCIATION, INC., ITS SUCCESSORS AND ASSIGNS, FOR LANDSCAPE BUFFER PURPOSES AND ARE THE PERPETUAL MAINTENANCE OBLIGATION OF SAID ASSOCIATION, ITS SUCCESSORS AND ASSIGNS, WITHOUT RECOURSE TO PALM BEACH COUNTY.

10. LIMITED ACCESS EASEMENTS

THE LIMITED ACCESS EASEMENTS AS SHOWN HEREON ARE HEREBY DEDICATED TO THE BOARD OF COUNTY COMMISSIONERS OF PALM BEACH COUNTY, FLORIDA, FOR THE PURPOSE OF CONTROL AND JURISDICTION OVER ACCESS RIGHTS.

DEDICATIONS AND RESERVATIONS:

11. BUFFER DRAINAGE EASEMENTS

THE BUFFER DRAINAGE EASEMENTS, AS SHOWN HEREON, ARE HEREBY DEDICATED IN PERPETUITY FOR DRAINAGE OF TRACTS L2 AND L6 OF THE PLAT OF DIAMOND "C" RANCH, AS RECORDED IN PLAT BOOK 99, PAGES 173 THROUGH 179 OF THE PUBLIC RECORDS OF PALM BEACH COUNTY, FLORIDA. THE MAINTENANCE OF ALL DRAINAGE FACILITIES LOCATED THEREIN SHALL BE THE PERPETUAL MAINTENANCE OBLIGATION OF THE PALM BEACH PLANTATION HOMEOWNERS ASSOCIATION, INC., ITS SUCCESSORS AND ASSIGNS, WITHOUT RECOURSE TO PALM BEACH COUNTY.

IN WITNESS WHEREOF, THE ABOVE NAMED CORPORATION HAS CAUSED THESE PRESENTS TO BE SIGNED BY ITS PRESIDENT, AND ITS CORPORATE SEAL TO BE AFFIXED HERETO BY AND WITH THE AUTHORITY OF ITS BOARD OF DIRECTORS, THIS 24th DAY OF February, 2004.

BY: TOWN & COUNTRY BUILDERS, INC., A FLORIDA CORPORATION.
WITNESS: *Stephen B. Ziller* PRINT NAME STEPHEN B. ZILLER
BY: *Timothy R. Kelly* PRINT NAME TIMOTHY R. KELLY
WITNESS: *Sally Hamerman* PRINT NAME Sally Hamerman

ACKNOWLEDGMENT:

STATE OF FLORIDA) COUNTY OF PALM BEACH)
BEFORE ME PERSONALLY APPEARED TIMOTHY R. KELLY, WHO IS PERSONALLY KNOWN TO ME, OR HAS PRODUCED AS IDENTIFICATION, AND WHO EXECUTED THE FOREGOING INSTRUMENT AS PRESIDENT OF TOWN & COUNTRY BUILDERS, INC., A FLORIDA CORPORATION AND SEVERALLY ACKNOWLEDGED TO AND BEFORE ME THAT HE EXECUTED SUCH INSTRUMENT AS SUCH OFFICER OF SAID CORPORATION, AND THAT THE SEAL AFFIXED TO THE FOREGOING INSTRUMENT IS THE CORPORATE SEAL OF SAID CORPORATION AND THAT IT WAS AFFIXED TO SAID INSTRUMENT BY DUE AND REGULAR CORPORATE AUTHORITY, AND THAT SAID INSTRUMENT IS THE FREE ACT AND DEED OF SAID CORPORATION.
WITNESS MY HAND AND OFFICIAL SEAL THIS 24th DAY OF February, 2004.
MY COMMISSION EXPIRES: 9-24-07
COMMISSION NUMBER: DD232130
NOTARY PUBLIC *Melanie M. Donald* PRINT NAME

ACCEPTANCE OF RESERVATIONS:

STATE OF FLORIDA) COUNTY OF PALM BEACH)
THE PALM BEACH PLANTATION HOMEOWNERS ASSOCIATION, INC., HEREBY ACCEPTS THE DEDICATIONS OR RESERVATIONS TO SAID ASSOCIATION AS STATED AND SHOWN HEREON, AND HEREBY ACCEPTS ITS MAINTENANCE OBLIGATIONS FOR SAME AS STATED HEREON, DATED THIS 24th DAY OF February, 2004.
WITNESS: *Stephen B. Ziller* PRINT NAME STEPHEN B. ZILLER
BY: *Timothy R. Kelly* PRINT NAME TIMOTHY R. KELLY, PRESIDENT

ACKNOWLEDGMENT:

STATE OF FLORIDA) COUNTY OF PALM BEACH)
BEFORE ME PERSONALLY APPEARED TIMOTHY R. KELLY, WHO IS PERSONALLY KNOWN TO ME, OR HAS PRODUCED AS IDENTIFICATION, AND WHO EXECUTED THE FOREGOING INSTRUMENT AS PRESIDENT OF PALM BEACH PLANTATION HOMEOWNERS ASSOCIATION, INC., A CORPORATION, AND SEVERALLY ACKNOWLEDGED TO AND BEFORE ME THAT HE EXECUTED SUCH INSTRUMENT AS SUCH OFFICER OF SAID CORPORATION, AND THAT THE SEAL AFFIXED TO THE FOREGOING INSTRUMENT IS THE CORPORATE SEAL OF SAID CORPORATION AND THAT IT WAS AFFIXED TO SAID INSTRUMENT BY DUE AND REGULAR CORPORATE AUTHORITY, AND THAT SAID INSTRUMENT IS THE FREE ACT AND DEED OF SAID CORPORATION.
WITNESS MY HAND AND OFFICIAL SEAL THIS 24th DAY OF February, 2004.
MY COMMISSION EXPIRES: 9-24-07
COMMISSION NUMBER: DD232130
NOTARY PUBLIC *Melanie M. Donald* PRINT NAME

MORTGAGEES CONSENT

STATE OF FLORIDA) COUNTY OF PALM BEACH)
THE UNDERSIGNED HEREBY CERTIFIES THAT IT IS THE HOLDER OF A MORTGAGE, UPON THE PROPERTY DESCRIBED HEREON AND DOES HEREBY JOIN IN AND CONSENT TO THE DEDICATION OF THE LAND DESCRIBED IN SAID DEDICATION BY THE OWNER THEREOF AND AGREES THAT ITS MORTGAGE WHICH IS RECORDED IN OFFICIAL RECORDS BOOK 11309, AT PAGE 1371, OF THE PUBLIC RECORDS OF PALM BEACH COUNTY, FLORIDA, SHALL BE SUBORDINATED TO THE DEDICATION SHOWN HEREON. IN WITNESS WHEREOF, THE SAID CORPORATION HAS CAUSED THESE PRESENTS TO BE SIGNED BY ITS SENIOR VICE PRESIDENT AND ITS CORPORATE SEAL TO BE AFFIXED HERETO BY AND WITH THE AUTHORITY OF ITS BOARD OF DIRECTORS THIS 24th DAY OF February, 2004.
WACHOVIA BANK, N.A.
WITNESS: *Christina Baker* PRINT NAME Christina Baker
BY: *Bruce W. Perkins, Jr.* PRINT NAME BRUCE W. PERKINS, JR. SENIOR VICE PRESIDENT

NOTES COORDINATES, BEARINGS AND DISTANCES

COORDINATES SHOWN ARE GRID DATUM = NAD 83 1990 ADJUSTMENT ZONE = FLORIDA EAST LINEAR UNIT = US SURVEY FEET COORDINATE SYSTEM 1983 STATE PLANE TRANSVERSE MERCATOR PROJECTION ALL DISTANCES ARE GROUND SCALE FACTOR = 1.00002175 GROUND DISTANCE X SCALE FACTOR = GRID DISTANCE BEARINGS AS SHOWN HEREON ARE GRID BEARING, NAD 83 1990 ADJUSTMENT, FLORIDA EAST ZONE.
S88°33'01"E (PLAT BEARING) 00°04'41" = BEARING ROTATION COUNTER CLOCKWISE (PLAT TO GRID)
S88°28'20"E (GRID BEARING)
NORTH LINE THIS PLAT

ACKNOWLEDGMENT:

STATE OF FLORIDA) COUNTY OF ORANGE)
BEFORE ME PERSONALLY APPEARED *Ronald L. Platt, Esq.* WHO IS PERSONALLY KNOWN TO ME, OR HAS PRODUCED AS IDENTIFICATION, AND WHO EXECUTED THE FOREGOING INSTRUMENT AS SENIOR VICE PRESIDENT OF WACHOVIA BANK, N.A., AND SEVERALLY ACKNOWLEDGED TO AND BEFORE ME THAT HE/SHE EXECUTED SUCH INSTRUMENT AS SUCH OFFICER OF SAID CORPORATION, AND THAT THE SEAL AFFIXED TO THE FOREGOING INSTRUMENT IS THE CORPORATE SEAL OF SAID CORPORATION AND THAT IT WAS AFFIXED TO SAID INSTRUMENT BY DUE AND REGULAR CORPORATE AUTHORITY, AND THAT SAID INSTRUMENT IS THE FREE ACT AND DEED OF SAID CORPORATION.
WITNESS MY HAND AND OFFICIAL SEAL THIS 24th DAY OF February, 2004.
MY COMMISSION EXPIRES: 7-23-07
COMMISSION NUMBER: 80234210
NOTARY PUBLIC *Christina Baker* PRINT NAME

TITLE CERTIFICATION:

STATE OF FLORIDA) COUNTY OF PALM BEACH)
I, *Ronald L. Platt, Esq.* A DULY LICENSED ATTORNEY IN THE STATE OF FLORIDA, DO HEREBY CERTIFY THAT I HAVE EXAMINED THE TITLE TO THE HEREON DESCRIBED PROPERTY; THAT I FIND THE TITLE TO THE PROPERTY IS VESTED IN TOWN & COUNTRY BUILDERS, INC., A FLORIDA CORPORATION, THAT THE CURRENT TAXES HAVE BEEN PAID; THAT ALL MORTGAGES NOT SATISFIED OR RELEASED OF RECORD NOR OTHERWISE TERMINATED BY LAW ARE SHOWN HEREON; AND THAT THERE ARE ENCUMBRANCES OF RECORD BUT THOSE ENCUMBRANCES DO NOT PROHIBIT THE CREATION OF THE SUBDIVISION DEPICTED BY THIS PLAT.
DATED: February 24, 2004
Ronald L. Platt, Esq. ATTORNEY AT LAW LICENSED IN FLORIDA

COUNTY ENGINEER:

THIS PLAT IS HEREBY APPROVED FOR RECORD PURSUANT TO PALM BEACH COUNTY ORDINANCE 95-33, AND IN ACCORDANCE WITH SEC. 177.07(2), F.S., THIS 24th DAY OF February, 2004, AND HAS BEEN REVIEWED BY A PROFESSIONAL SURVEYOR & MAPPER EMPLOYED BY PALM BEACH COUNTY IN ACCORDANCE WITH SEC. 177.081(1), F.S.
BY: *George T. Webb, P.E.* COUNTY ENGINEER

SURVEYOR'S CERTIFICATE:

THIS IS TO CERTIFY THAT THE PLAT SHOWN HEREON IS A TRUE AND CORRECT REPRESENTATION OF A SURVEY MADE UNDER MY RESPONSIBLE DIRECTION AND SUPERVISION; THAT SAID SURVEY IS ACCURATE TO THE BEST OF MY KNOWLEDGE AND BELIEF; THAT PERMANENT REFERENCE MONUMENTS (P.R.M.'S) HAVE BEEN PLACED AS REQUIRED BY LAW AND THAT PERMANENT CONTROL POINTS (P.C.P.'S) AND MONUMENTS ACCORDING TO SEC. 177.091(9), F.S., WILL BE SET UNDER THE QUARANTEES POSTED WITH THE PALM BEACH COUNTY BOARD OF COUNTY COMMISSIONERS FOR THE REQUIRED IMPROVEMENTS, AND, FURTHER, THAT THE SURVEY DATA COMPLIES WITH ALL THE REQUIREMENTS OF CHAPTER 177, FLORIDA STATUTES, AS AMENDED, AND THE ORDINANCES OF PALM BEACH COUNTY, FLORIDA.
DATED: 2/27/04
DAVID P. LINDLEY REG. LAND SURVEYOR #5005 STATE OF FLORIDA LB #3591

Professional seals and stamps for TOWN & COUNTRY BUILDERS, INC., CAULFIELD and WHEELER, INC., PALM BEACH PLANTATION HOMEOWNERS ASSOCIATION, INC., and SURVEYOR.

SUBDIVISION DIAMOND C RANCH POD E/F REPLAT
BOOK 101 PAGE 144
FLOOD ZONE AH ZONING PD
QUAD 47 ZIP CODE 33411
SAL 799, 1009
PUD NAME DIAMOND C RANCH